



The logo for KRIDAY ENTERPRISE features a stylized red and blue chevron symbol on the left. To its right, the word "KRIDAY" is written in a bold, blue, sans-serif font. Below "KRIDAY", the word "ENTERPRISE" is written in a smaller, white, sans-serif font, set against a red rectangular background.



# About Us

Kriday Enterprise is a dynamic force in industrial distribution with a legacy of experience. Our company is poised to redefine standards in distribution. We have an illustrious background, having worked with world-class organizations and served prestigious customers across diverse industries.

Here at Kriday Enterprise, our primary focus is evolving towards offering comprehensive solutions to end users, surpassing mere supply of products. We are dedicated to providing exceptional service and top-quality products at competitive prices, ensuring that we remain the preferred choice of our customers. Our steadfast adherence to ethics and integrity forms the bedrock of our principles, with no room for compromise or justification.”

## Our Mission

At Kriday Enterprise, our mission is to revolutionize industrial distribution by seamlessly blending years of experience with innovative solutions. We are committed to providing our clients with unparalleled service, contributing to the success and growth of their businesses.



## **THIN WHEEL**

Grinding Wheel  
Cutting Wheel  
Chopsaw Wheel  
Ultra Thin wheel



## **NON-Woven**

Unified Discs  
Unified Wheels  
Hand Pads  
Valve Grinding  
Compounds



## **COATED**

Fibre Discs  
Flap discs  
Flap Wheels  
Mops  
Cloath Rolls  
Velcro Discs



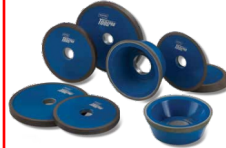
## **BONDED**

Carbide Wheels  
Toolroom Wheels  
SAW Gumming  
Wheels  
Offhand Wheels  
Roll Grinding  
Stones



## **SUPER Abrasives**

Metal Bond  
Resin Bond  
CBN Wheel  
Electroplated Wheels







**Manual Metal Arc Welding**



**Flux Cored Wires & Wire Feeder**



**Brazing Alloys & Fluxes**



**Soldering Alloys & Fluxes**



**Thermal Spray Powders**



**Cold Repair Compounds**



**EWAC Care Kit**





## We offer two distinct Mineral Wool insulation solutions

### Rockinsul™



Stone wool (rock wool) is made by melting volcanic rock such as basalt and converting them into fiber form. With the ability to operate at service temperatures upto 750°C, it is predominantly used in high temperature industrial applications.

**High service temperature**

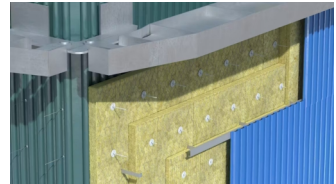
**High fire rating**

**Energy efficiency**

**Mechanical strength**

### Twigain®

Glass wool, also known as fiberglass insulation, is made by melting glass and other minerals with a significant percentage of recycled content. This melt is then converted to resilient fiber form. The glass wool insulation is lightweight and can be used upto a service temperature of 230°C. It can be used in all general-purpose applications such as pre-engineered building, commercial building, drywall partition, HVAC and automobile.

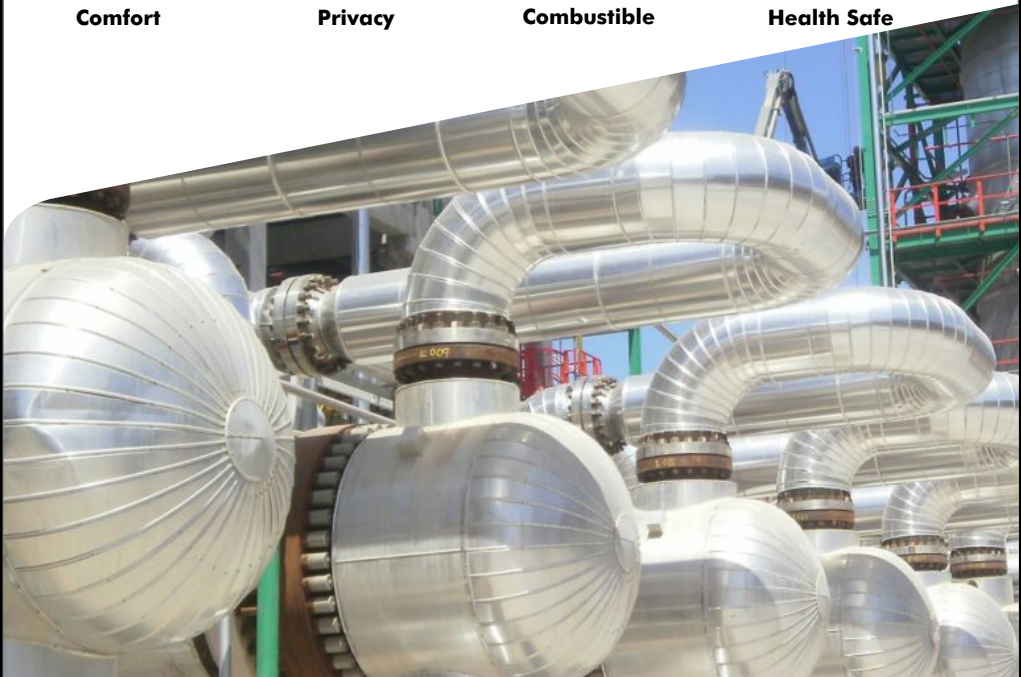


**Thermal Comfort**

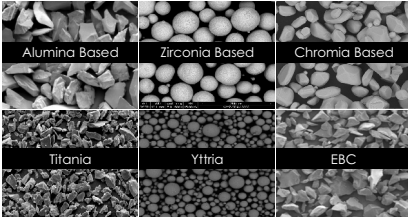
**Acoustic Privacy**

**Non-Combustible**

**Biosoluble and Health Safe**



### Plasma Spray Powder



Flexicords

### Flame Spray

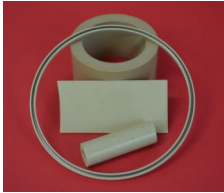
Rokide



Flame Equipment

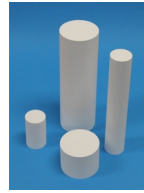


### Fillers for PTFE

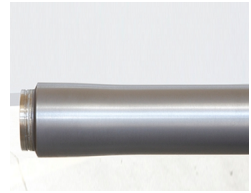


Ekonol® Aromatic Polyester

### Materials for PVD/EBPVD



Ingots for EBPVD



Sputtering Targets

### Boron Nitride

Powder Solutions



CeraGlide Coatings



Machinable Ceramics



PDS



# Industries we Cater



**Saw & DI Pipes**



**Wind**



**SS Pipe & Tube**



**Tyre Industries**



**Construction**



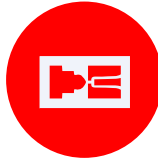
**Defense**



**Aerospace**



**Steel**



**Plastic & Rubber  
Moulding**



**Power Plant**



**Print**



**Refinery**



**Foundry**



**Automobile**



**Chemical**







## Contact Us

 +91 9377708996

 [bhavik@kridayenterprise.com](mailto:bhavik@kridayenterprise.com)

 [www.kridayenterprise.com](http://www.kridayenterprise.com)

### Ahmedabad Office:

 B-354, Money Plant High Streets, Jagatpur road,  
S.G.Highway, Gota, Ahmedabad - 382481

### Gandhidham office:

 G-55, Silver Arc building, Plot No. 57, Sector-8,  
Gandhidham-370201